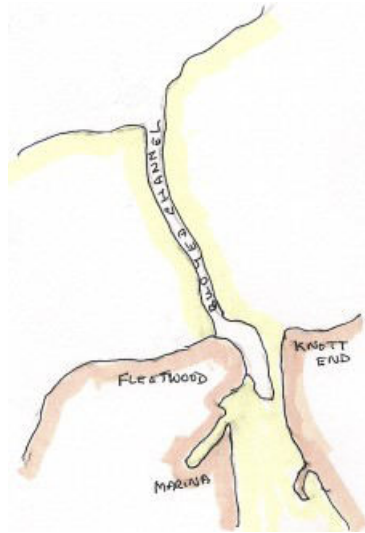


August 1987 Fleetwood to Anglessey By Edwin Dewhirst

Thurs. 6 th. Aug. HW L/pool 0850 **Stannah to Lytham..**

I left home early and drove to Stannah on the river Wyre, accompanied by Bess who was going on her first trip and my next door neighbour who was going to take my car and trailer home for me. Stannah not being a safe place to leave vehicles for any length of time. With Norman's help I was rigged and launched by 0900, then after lashing the trolley on to the trailer Norman left for home and I motored down the channel to Knott End where I picked up a mooring whilst I tidied up and had a coffee before casting off, setting sails, streaming the log and beating down the channel into a Northerly breeze which gradually backed to NW. then W. I beat into the Lune Deep and out to Shell Wharf where I altered co. S. past Blackpool and by 1615 I was past the Ribble Fairway buoy and looking for the entrance to the channel.



This was my first visit to the Ribble and although I was aware that the ship channel was no



longer dredged and that the entrance was through a break in the training wall, I had no clear idea of where it was nor what the buoyage system was. After motoring in till I ran out of water I retreated into 2 metres and anchored to wait for the tide to rise. At 1730 I saw a couple of fishing vessels heading into the entrance so I raised the anchor, fired up the outboard and headed towards them and after negotiating a shallow patch I saw the channel markers which were yellow painted barrels. I rounded the most Southerly barrel and found deeper water and with the flood tide under me I was soon off Lytham where I picked up a vacant mooring and dropped the legs ready

to dry out. After taking Bess ashore I went back on board for a meal and spent the evening

on board.
Distance 27 miles.

Fri. 7 th. Lytham

Wind and rain in the night and at 0900 it was blowing about f.6 and gusting f.7 or 8. Not the sort of conditions in which to row a dinghy for any distance so I cast off the mooring and went close inshore and anchored . From there I was able to get ashore without too much trouble and when I dried out I could splodge through the mud carrying Bess. In the evening when the wind had dropped I moved back out to a mooring.

Sat. 8 th. Lytham

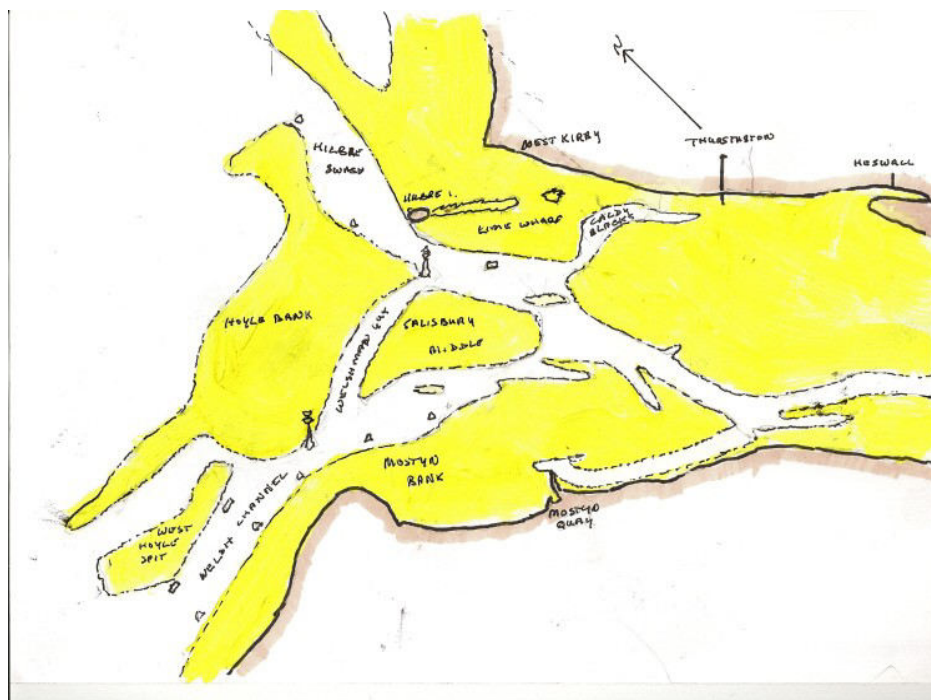
At 1045 the wind was NNW f.2-3 with occasional showers and at 1115 after the tide had turned I cast off, set the sails and streamed the log. I hadn't gone more than a mile when heavy rain set in and visibility was reduced to a few hundred yards so I turned back and moored up again. The rained persisted until mid afternoon but the sky remained overcast all day.

Sun. 9 th. HW L/pool 1200. Lytham to Thurstaston (River Dee)

A better morning with the wind NW f.1-2 and I set the sails and cast off at 1215 as the tide turned and I streamed the log and beat down the channel the wind was a bit light and I soon resorted to motorsailing and as the wind fluctuated I alternately sailed and motorsailed out past Jordan's Spit and the Mersey entrance and at 1900 I was abeam of the Hibre buoy and turned into the channel, anchoring off Thurstaston at 2100 . After taking Bess for a much

needed trip ashore I returned on board and made myself a late meal.

Distance 33 miles



Mon. 10 th. Thurstaston to Menai Strait

HW L/pool 1247
The Forecast SE 4-5

A bright sunny morning for a change and Bess and I sat in the cockpit enjoying it till 1200 when I set the sails

raised the anchor and streamed the log and set off against the last of the flood. The wind a very light NW and like yesterday I alternately sailed and motorsailed all the way along the coast, round the Orme and into the Menai Strait. anchoring off the old lifeboat house at 2110.

Distance. 37 miles.

Tues. 11 th. **Lifeboat slip to Port Penrhyn**

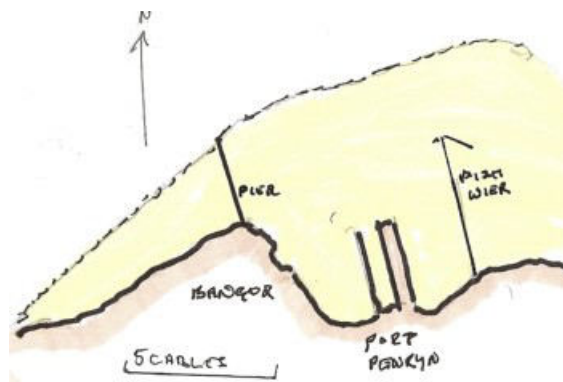
A wet and windy morning. I motored round to Gallows Point for petrol and water and walked into Beaumaris for fresh food and to phone home and John Gray (and arranged to meet him in Port Penryn. Back on board I motored across and had just tied up when John arrived from his home in Colwyn Bay. Not having seen John since 1981 we had plenty to catch up on over a leisurely lunch and the afternoon was soon gone.

Distance. 2.5 miles

Wed. 12 th. **Port Penrhyn to Belan Fort Dock**

At 1145 it was blowing SW f.4 as I motored out of the harbour, out past Bangor Pier and down through the Swellies at slack water at 1245 and at 1300 I picked up a mooring where I had lunch while waiting for the ebb to increase. Unfortunately so did the wind and by the time I cast off it was blowing a good f.5 and I rolled reefs into both sails as I set them, then with the wind against the ebb kicking up breaking seas I had a wet sail down to Belan where I picked up a mooring, stowed the sails and motored into the small harbour there. By 1700 I was dried out and for my £3 harbour dues I was able to have a good shower later in the evening.

Distance sailed 10 miles



Thurs. 13 th. HW L/pool 1457 Const -1 h 25 m. -- HW 1332. Belan to Abermenai

After heavy rain in the night the wind was W f.4. The sky had cleared by 1900 and after breakfast Bess and I walked up the road to a caravan site where I was able to get fresh milk and a butty lunch before walking back to Belan fort. The wind still fresh so I cast off and motored across to Abermenai where we went ashore and found that it was warm enough to sunbathe in the lee of the sand dunes.

Fri. 14 th

Abermenai to Caernarvon and back

HW L/pool 1536 Const. -1h. 25 m. -- 1411

Up to a breezy morning and at 1100 I raised the anchor and took the tide up to Caernarvon with just the genoa unfurled. I stocked up with fresh food and phoned home. Then at 1530 I motored out into the Strait to find that the wind was SW f. 4-5 and I had another wet beat back down to Abermenai.

Distance 4 miles

Sat. 15 th. **Abermenai Point to Moelfre.**

Awoke to a calm morning and by 1100 the breeze was a light SW f.2 as I raised the anchor and unrolled the genoa to follow the back channel past Foel Ferry, creeping over the shallows with the keel up, then headed up past Port Dinorwic to the Swellies where I arrived at 1315, one hour before slack water, but with with engine running I had no problems with the fast running tide . Once through the Swellies the wind was a brisk SW. f. 4 and with the flood still under me I had a fast sail to Gallows Point where I stopped to fill up with petrol. At 1430 I hoisted and reefed the main and genoa and cast off, sailing goose winged to Puffin Island then close hauled along Table Road . By 1600 it was gusting f.6 and I rolled more reefs in the sails and I had a tough beat to get past Bennlech and Traeth Bychan before handing the sails and coming to anchor with two anchors off Moelfre at 1830. Distance .23.5 miles



Sun. 16 th.

The wind stayed strong and gusty and I remained at anchor all day.

Mon. 17 th. **Moelfre To Gallows Point**

I had planned to go round Lynas Point to Caemas Bay but had forgotten to set my alarm for the forecast but the skipper of the yacht anchored close by said that it was for NW f.8 later in the day so along with everyone else I decided to run back into the Menai Strait . At 1200 I broke one anchor out before hoisting the sails and raising the other and heading for Puffin Island and the Menai Strait, picking up a mooring off Beaumaris at 1630 to go ashore to the shops before motoring into Mountfield Bay and picking up a mooring for the night. The NW gale not having materialised.
Distance 13.5 miles

Tues. 18 th.

A calm misty morning, the mist clearing by 1100 when I cast off the mooring and drifted with the tide to Trwyn Du and anchored for lunch then took Bess ashore for a walk along the cliffs, then back to Penmon priory before going back on board and motoring back to Beaumaris and anchoring in the lee of Gallows Point. Distance

Wed. 19 th.

Blowing SW f. 5 -6 stayed on the mooring all day.

Thurs. 20 th.

Windier still, blowing f. 6-7 I stayed on the mooring.

Fri. 21 st. **Gallows Point to Abermenai Point**

Calm at last. At 0800 I cast off the mooring and motored through the Swellies, then set the sails and drifted with the tide to Caernarvon where I phoned home and stocked up with fresh food before drifting down to Abemenai Point where I anchored for a night of heavy rain and thunder. Distance 10 miles

Sat . 22 nd. **Abermanai Point to Llandwyn Island**

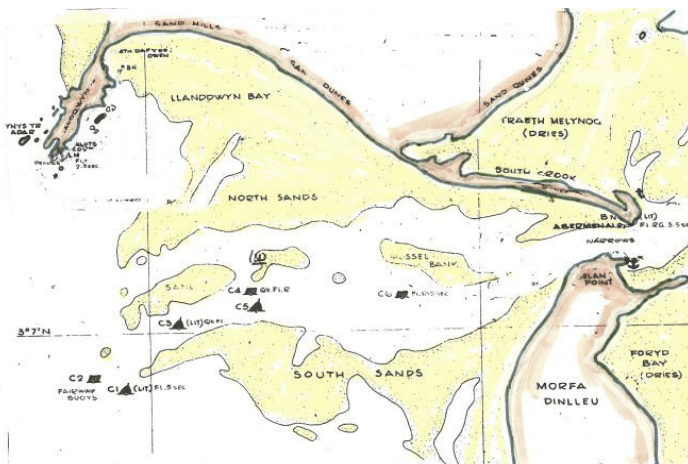
At 1000 the wind was NE 2 -3 and the forecast was poor. By 1115 the wind was NE 3-4 and blowing across the tide making Sabine roll like a pig so I set the sails , raised the anchor and sailed out to Llandwyn Island where I anchored in Mermaid Cove. Distance 4 miles

Sun 23 rd..

The forecast at 0555 was N f. 3 - 5 and rain. It was raining at the time. When I did get out of my sleeping bag it was overcast and calm and it was soon raining again so I stayed at anchor.

Mon. 14 th. **Llandwyn to Porth Wen (Rhoscolyn)**

I was up at 0800 to find it bright and clear with no wind but by 1000 it was filling in from the NNE as I set the sails and raised the anchor, then streamed the log as I sailed out of the bay and down to the S. Cardinal buoy guarding the SW rock. Once round the buoy I found that Sabine was hard on the wind which veered and strengthened during the morning then eased again by 1200 and at 1315 I anchored in Porth Wen. During the afternoon there were several learners on sailboards and a group of youngsters being taught to use canoes without a safety boat in attendance. The wind was offshore and several boards and canoes lost control and drifted out of the bay and I found myself acting as safety boat and towing them back into shelter.. Distance . 9 miles



Tues. 25 th. **Porth wen to Treaddur Bay to Rhosneigr**

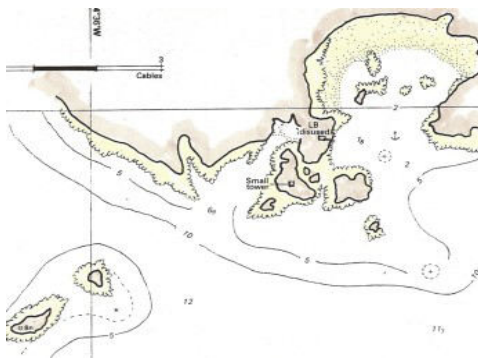
During the night Bess started having waterworks trouble and I was up a number of times to take her ashore and despite it blowing NW f. 4 -5 I decided that I needed to take her to a vet.

I thought that Holyhead would be the place to go so I set reefed sails and raised the anchor and sailed out of the bay. With the wind gusting up to f. 5

against the tide it was a bit rough and I beat into Treaddur Bay and picked up a mooring in Porth Diana and went ashore to the phone. I found the vet's phone no. and rang to find that there was no surgery that day in Holyhead, but there was one near Rhosneigr. So it was back to Sabine cast off and set sail to retrace my course past Rhoscolyn and on to Rhosneigr where I anchored at 1615 and after having a brew I took Bess ashore and set off to find the vet's surgery which was about 3 miles from the village. However I managed to get a lift for most

of the way. The vet examined Bess and diagnosed cystitis and gave me a course of antibiotics for her. We then had to walk all the way back to Rhosneigr, arriving back on board just before a heavy shower hit.

Distance 8 miles



Wed. 26 th. Rhosneigr to Cymyran Strait

I spent a very uncomfortable few hours near high water when the swell came over the reefs, then at 0555 the forecast was for a NW gale expected soon so immediately I floated off I motored round into the Cymyran Strait and anchored. I was non too soon as it blew up shortly afterwards and blew hard all day.

Distance 2 miles .

Thurs. 27 th. Cymyran Strait to Abermenai Point.

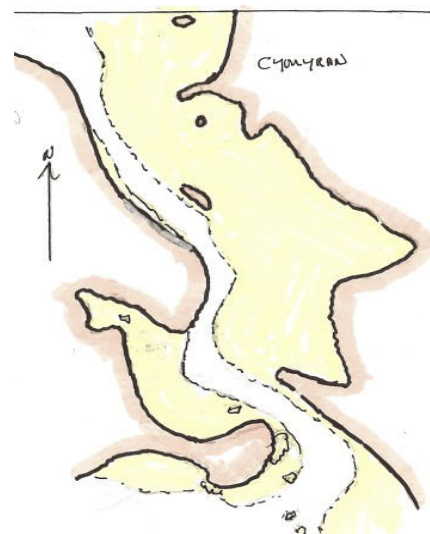
HW L/pool 1350 Const. Abermenai Point - 1 hr. 25 m. HW 12255

At 0800 it was a fine morning and the wind was easing. Bess much better. At 1000 I set the sails, raised the anchor and motored out of the strait and set a co. goosewinged and going like

the clappers with a NNW f.4 behind me, for Llandwyn Island then when I arrived there I decided to go across the bar and into the Menai Strait. I made it as far as the Abermenai Beacon before being stopped by the ebb, but by firing up the engine and gunning it I made it round the Point and anchored at 1330.

Distance 12 miles.

Fri. 28 th. Abermenai Point to Gallows Point



HW L/pool 1421 Slack water Swellies 1221 .

After a very calm night it was dull with a light breeze from the W. I motored out into the Strait at 0915 then set the sails and helped by the strong tide I swept up to the Swellies going through at 1100 with the engine on to give me control in the strong eddies. By 1145 I was moored at Gallows Point. After topping up with water and petrol I walked into Beaumaris to phone home and to stock up with fresh food.

Distance 10 miles

Sat . 29 th. HW L/pool 1452 Gallows Point to Thurstaston

The shipping forecast was SW f. 3-4 and the weather felt more settled and at 0615 I cast off my in a flat calm and motored to Trwyn Du where I anchored and took Bess ashore at

0715. By 1745 we were back on board and motoring across Conway Bay till a light breeze picked up and I was able to sail at 3-4 knots goose winged with the genoa poled out. Once

past the Orme the tide was favourable and I sailed quietly along the coast till just past the Chester Flats Buoy when the wind dropped and I had to fire up the engine and motor the rest of the way, arriving at Thurstaston at 1630.

Distance 39 miles

Sun. 30 th. **Thurstaston to Lytham**

HW L/pool 1526 The shipping forecast was V 3/4 - SE/E .

It was calm when I motored down the channel to Hilbre sands where I anchored and took Bess ashore before motoring out of the channel. When the wind picked up at 0900 it was NWxW 3 increasing to f.4 during the morning and I had a brisk sail, arriving of the Ribble Fairway Buoy at 1330 . This time I had no trouble finding the channel and I was moored off Lytham by 1530 at slack water.

Distance 33 miles

Mon. 31 st **Lytham to Knott End**

. HW L/pool 1557

The forecast was E f.3-4 and at 0815 when I cast off the mooring it was blowing f.3 and the tide was well out and I motored down the channel with the keel up and at 0915 I just managed to bump quietly over the bar and was able to lower the keel and set the sails for a brisk sail in the SE f. 4 which was blowing by then, till 1500 when I turned into the Wyre channel and it turned into a wet beat before I handed the sails and motored the last half mile past Fleetwod Docks and moored off Knott End .

Distance 22 miles.

Tues. 1 st. Sept.

Norman, my neighbour and driver had said that he wouldn't mind a bit of a sail and I had arranged to meet him at 0800 but it was a drizzly morning and I didn't expect him. However he wasn't going to be put off by the weather and duly arrived and we set sail down the channel into the Lune Deep with a very light SE breeze and the ebb taking us out as far as Shell Wharf. As the tide turned the wind veered to NW and the mist cleared an we had a good sail up to the Heysham No 2 buoy before returning to Knott End. After putting Norman ashore I took the flood up the river and picked up a mooring at Wardley's creek at 1715.

Distance 20 miles.

Wed. 2 nd.

had arrived with my car and trailer at 0630 . Between us we soon had Sabine winched onto the trailer, pulled out and ready for home.

In spite of the weather I sailed 254 miles in the four weeks that I was away and had been very lucky to get 'windows' to sail to the Menai straits and back to the Ribble.

| | | | |
|--------|------|-------------------------------|---------|
| Charts | 2010 | Morecambe Bay | 1-37500 |
| | 1981 | Approaches to Preston | 1-75000 |
| | 1978 | Great Ormes Head to Liverpool | 1-75000 |
| | 1977 | Holyhead to Great Ormes Head | 1-75000 |

1976

Caernarvon Bay

1-75000

Pilot book Dr. Robert Kemp Cruising Guide to Anglessey
Macmillan Nautical Almanac

Admiralty Tidal Stream Atlas Irish Sea and Bristol Channel

Sketch maps are for illustration only and are not to be used for navigation

Copyright 2009 Edwin Dewhurst